

OSKAR Downdraft Table

General Safety Information

MACHINE WARNING SIGNS

▲ DANGER Indicates an imminently hazardous situation which, if not avoided, will result in death or serious injury.

▲ WARNING Indicates a potentially hazardous situation which, if not avoided, could result in death or serious injury.

▲ CAUTION Indicates a potentially hazardous situation which, if not avoided, may result in minor or moderate injury.

Used without the safety alert symbol (▲) indicates potentially hazardous situation which, if not avoided, may result in property damage.



Warning of electric shock

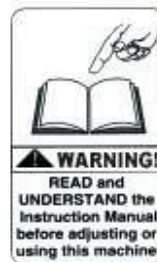
Do not expose the equipment to rain or use in damp locations.



Figure 1



Do not use the equipment around flammable products, if not avoided, sparks can ignite vapors from flammable products. Read and understand all warnings and operating instructions before using this equipment. Failure to follow all instructions may result in electric shock, fire, and/or serious personal injury or property damage.



Please read and save these instructions. Read carefully before attempting to assemble, install, operate or maintain the product described. Protect yourself and others by observing all safety information. Failure to comply with instructions could result in personal injury and/or property damage! Retain instructions for future reference.



OSKAR Downdraft Table

TABLE OF CONTENT

MACHINE WARNING SIGNS	1
Specifications	2
ELECTRICAL INSTALLATION	5
Control Panel	9
Accumulated Function:	9
Pulse Cleaning Setting:	10
Replacement Procedure for Filters	11
Repair Parts Illustration	13
Repair Parts List	14
Appendix	19

Specifications

Motor	5 HP (3730 W)
Air Volume (C.F.M.)	1500 Ft ³ /Min (42.5 M ³ /Min)
Table Size	56.6" x 47.8"
Packing Size (L x W x H)	96" x 79.5" x 104.3" (244 x 202 x 265 cm)
Net Weight	1102.3 lbs (500 kgs)
Gross Weight	1212.5 lbs (550 kgs)

Please read and save these instructions. Read carefully before attempting to assemble, install, operate or maintain the product described. Protect yourself and others by observing all safety information. Failure to comply with instructions could result in personal injury and/or property damage! Retain instructions for future reference.



OSKAR Downdraft Table

General Safety Information

(Continued)

▲ WARNING

For your own safety, read all of the instructions and precautions before operating tool.

▲ WARNING

Some dust created by power sanding, sawing, grinding, drilling and other construction activities contains chemicals known to cause cancer, birth defects or other reproductive harm.

Some examples of these chemicals are:

1. Lead from lead-based paints.
2. Crystalline silica from bricks and cement and other masonry products.
3. Arsenic and chromium from chemically-treated lumber.

Your risks from these exposures vary, depending on how often you do this type of work. To reduce your exposure to these chemicals: work in a well ventilated area and work with approved safety equipment. Always wear **OSHA/NIOSH** approved, properly fitting face mask or respirator when using such tools.

▲ CAUTION

Always follow proper operating procedures as defined in this manual –

even if you are familiar with use of this or similar tools. Remember that being careless for even a fraction of a second can result in severe personal injury.

BE PREPARED FOR JOB

1. Wear proper apparel. Do not wear loose clothing, gloves, neckties, rings, bracelets or other jewelry which may get caught in moving parts of machine.
2. Wear protective hair covering to contain long hair.
3. Wear safety shoes with non-slip soles.
4. Wear safety glasses complying with United States ANSI Z87.1. Everyday glasses have only impact resistant lenses. They are **NOT** safety glasses.
5. Wear face mask or dust mask if cutting operation is dusty.
6. Be alert and think clearly. Never operate power tools when tired, intoxicated or when taking medications that cause drowsiness.

PREPARE WORK AREA FOR JOB

1. Keep work area clean. Cluttered work areas and downdraft tables invite accidents.
2. Do not use power tools in dangerous environments. Do not use power tools in damp or wet locations. Do not expose power tools to rain.

Please read and save these instructions. Read carefully before attempting to assemble, install, operate or maintain the product described. Protect yourself and others by observing all safety information. Failure to comply with instructions could result in personal injury and/or property damage! Retain instructions for future reference.



OSKAR Downdraft Table

3. Work area should be properly lighted.
4. Proper electrical outlet should be available for tool. Three-prong plug should be plugged directly into properly grounded, three-prong receptacle.
5. Extensions cords should have a grounding prong and the three wires of the extension cord should be the correct gauge.
6. Keep visitors at a safe distance from work area.
7. Keep children out of workplace. Make workshop childproof. Use padlocks, master switches and remove switch keys to prevent any unintentional use of power tools.

TOOL SHOULD BE MAINTAINED

1. Always unplug tool prior to inspection.
2. Consult manual for specific maintaining and adjusting procedures.
3. Keep tool lubricated and clean for safest operation.
4. Remove adjusting tools. Form habit of checking to see that adjusting tools are removed before switching machine on.
5. Keep all parts in working order. Check to determine that the guard or other parts will operate properly and perform their intended function.
6. Check for damaged parts. Check for alignment of moving parts, binding, breakage, mounting or any other condition that may affect a tool's operation.
7. A guard or other damaged part should be properly repaired or replaced. Do not perform makeshift repairs. (Use the parts list provided to order repair parts.)

KNOW HOW TO USE TOOL

1. Use right tools for job. Do not force tool or attachment to do a job for which it was not designed.
2. Disconnect tool when removing filter.
3. Avoid accidental start-up. Make sure that tool switch is in OFF position before plugging in.
4. Do not force tool. It will work most efficiently at the rate for which it was designed.
5. Leave hands free to operate machine. Protect hands form possible injury.
6. Never leave a tool running unattended. Turn the power off and do not leave tool until it comes to a complete stop.
7. Do not overreach. Keep proper footing and balance.
8. Never stand on tool. Serious injury could occur if tool is tipped over.
9. Keep hands away from moving parts.
10. Know your tool. Learn the tool's operation, application and specific limitations.



OSKAR Downdraft Table

⚠ WARNING

The operation of any power tool can result in foreign objects being thrown into the eyes, which can result in severe eye damage. Always wear safety glasses complying with United States ANSI Z87.1 before commencing power tool operation.

ELECTRICAL INSTALLATION

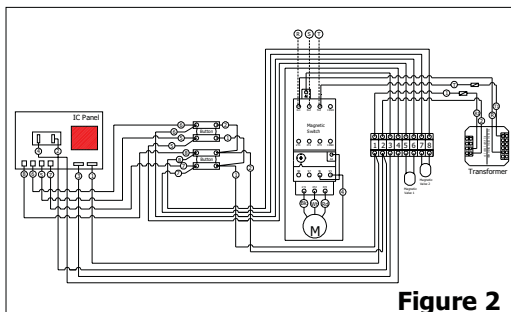


Figure 2

** Electrical Circuit Diagram

⚠ CAUTION

Improper connection of the equipment grounding conductor can result in a risk of electrical shock.

EXTENSION CORDS

1. The use of any extension cord will cause some drop in the voltage and loss of power.
2. Wires of the extension cord must be sufficient in size to carry the current and

maintain adequate voltage.

3. Use the table below to determine the minimum wire size (A.W.G.) extension cord.
4. Use only 3-wire extension cords having 3-prong grounding type plugs and 3-pole receptacles which accept the tool plug.
5. If extension cord is worn, cut or damaged in any way, have it replaced immediately.

EXTENSION CORD LENGTH

Wire Size	A.W.G.
Up to 100 ft	16

NOTE: Using extension cords of over 100 ft. is not recommended.

Operation

Operation of any power tool can result in foreign objects being thrown into eyes which can result in severe eye damage. Always wear safety goggles complying with United States ANSI Z87.1 before commencing power tool operation.

Always observe the following safety precautions:

1. **Always operate the machine with the filter in place.** When the filter is removed, the impeller is exposed at the



OSKAR Downdraft Table

filter opening.

2. **Explosion risk.** Suspended dust particles in conjunction with an ignition source may cause an explosion. Do not operate this machine in areas near pilot lights or open flames. NEVER use this downdraft table where paint fumes exist or within paint spray booth.
3. **This machine will not protect against lead paint dust or asbestos fibers.** These materials must be collected with special equipment because of the high hazard to human health. **DO NOT** attempt to collect these materials with this machine.
4. **Avoid collecting any material that is burning or smoking.** This includes matches, cigarettes and hot ashes.
5. Whenever adjusting or replacing any parts on the tool, turn switch OFF and remove the plug from power source.
6. Make sure all guards are properly attached and securely fastened.
7. Make sure all moving parts are free and clear of any interference.
8. Make sure all fasteners are tight and have not vibrated loose.

Maintenance



WARNING *Turn switch off and remove plug from power source outlet before*

maintaining your downdraft table.

1. Wipe off table top with a clean rag daily.
2. Check filters and dust screen. Clean with compressed air weekly.
3. Replace worn, cut or damaged line cord.
4. Clean casters as needed to ensure proper operation.
5. Frequently check that all nuts, bolts, screws, etc. have not loosened due to vibration.



OSKAR Downdraft Table

Troubleshooting Chart

Symptom	Possible Cause(s)	Corrective Action
Motor will not run	<ol style="list-style-type: none"> 1. Defective plug, cord, switch or motor 2. Blown fuse or circuit breaker 	<ol style="list-style-type: none"> 1. Check wiring, replace defective parts 2. Check fuse or breaker, replace
Excessive motor noise	Defective motor	Have motor checked by qualified motor service technician
Motor fails to develop full power or motor stalls	<ol style="list-style-type: none"> 1. Low voltage to downdraft table caused by circuit overload 2. Low voltage to downdraft table caused by undersized extension cords 3. Low voltage from power source 	<ol style="list-style-type: none"> 1. Remove other electric machines or appliances from circuit 2. Increase wire gauge size of extension cords or shorten extension cords 3. Request voltage check from power company
Motor slow to start or fails to reach full speed	Burned or defective motor	Check motor, replace if necessary
Tripping circuit breaker or fuses	Improper capacity of circuit breaker or fuses	Use proper capacity circuit breaker or fuse



OSKAR Downdraft Table

Dimensions (in mm / inch)

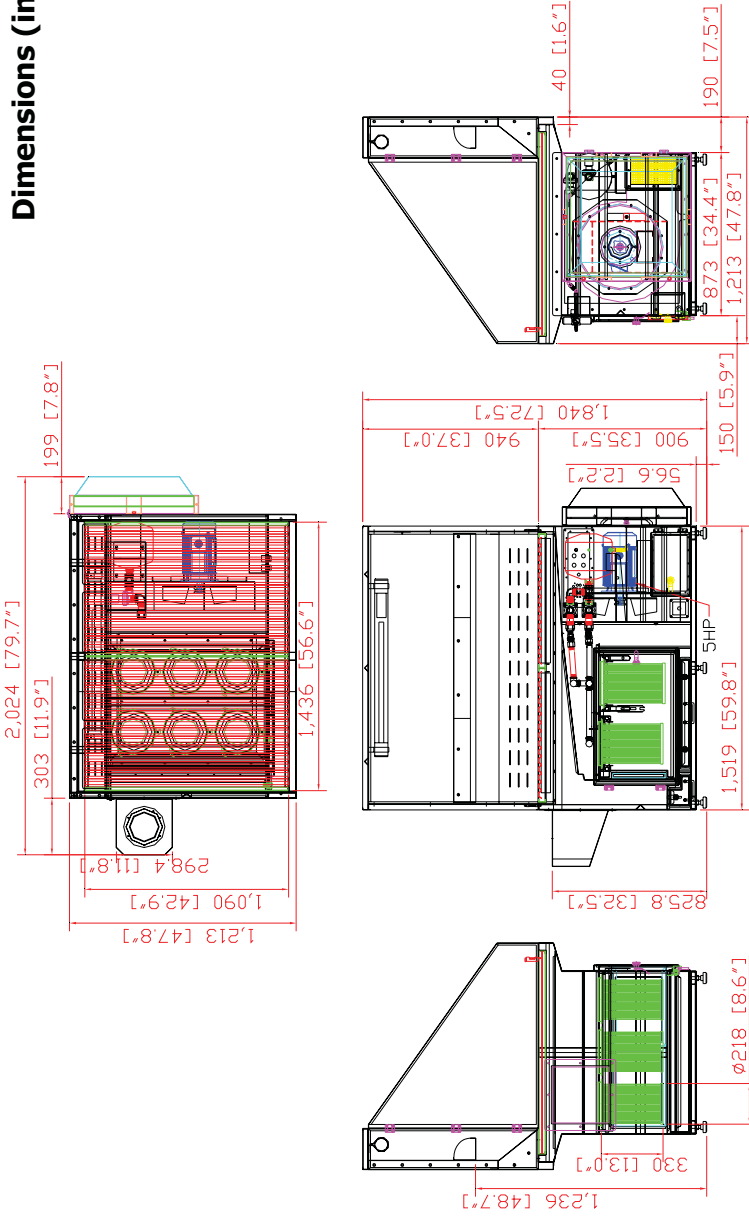


Figure 3

Please read and save these instructions. Read carefully before attempting to assemble, install, operate or maintain the product described. Protect yourself and others by observing all safety information. Failure to comply with instructions could result in personal injury and/or property damage! Retain instructions for future reference.

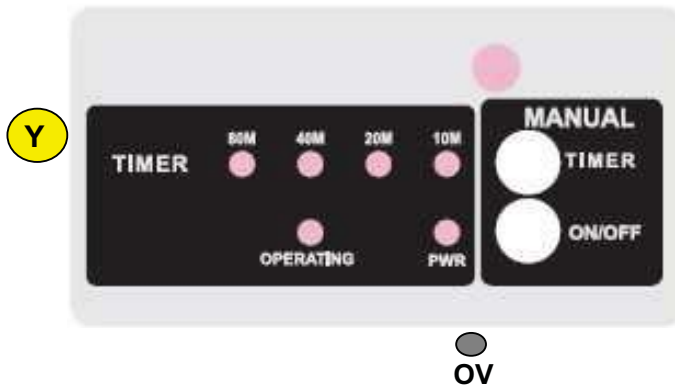


SMT-090424



OSKAR Downdraft Table

Control Panel



80M/40M/20M/10M: Time setting indicating light (accumulated function)

TIMER: Time adjusting button

ON/OFF: ON / OFF button

PWR: Power indicating light

OPERATING: Operation indicating light

Y : Manual air pulse jet cleaning button

OV : Overload 25A

OV

Accumulated Function:

1. When operating, timer will automatically set to release air in every 10 minutes.
2. Press TIMER once, the time setting light will be switched to 20M. Press it one more time, both 10M and 20M lights will be on, so the time is accumulated to clean in every 30 minutes.
3. Press TIMER again, the time setting light will be switched to 40M.
4. Press it one more time, both 10M and

40M lights will be on and the time is accumulated to clean in every 50 minutes. Press it again, both 20M and 40M lights will be on and the time is accumulated to clean in every 60 minutes. Press it again, the 10M, 20M and 40M lights will be on and the time is accumulated to clean in every 70 mins.

5. Following this cycle, the time setting may be adjusted manually to 10, 20, 30, 40, 50, 60, 70, 80, 90, 100, 120 and 150 mins. The maximum allowance time setting would be 150 mins.

Please read and save these instructions. Read carefully before attempting to assemble, install, operate or maintain the product described. Protect yourself and others by observing all safety information. Failure to comply with instructions could result in personal injury and/or property damage! Retain instructions for future reference.



OSKAR Downdraft Table

Pulse Cleaning Setting:

Timer Operation (Accumulated Function)				
Pulse Frequency	80M	40M	20M	10M
ON				●
1			●	
2			●	●
3		●		
4		●		●
5		●	●	
6		●	●	●
7	●			
8	●			●
9	●		●	
10	●	●		
11	●	●	●	●



OSKAR Downdraft Table

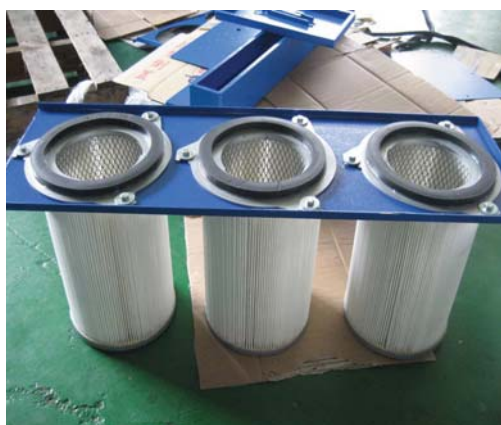
Replacement Procedure for Filters



Cartridge Clamp - one on each side.



Slide the (2) already assembled Cartridge sets into the Filter Clamps.



Cover the (3) Cartridges Dia. 225 x 330mmL (WHITE) with Filter Fixing Plate. Secure the Cartridges onto the Fixing Plate using (9) pcs of 5/16" x 3/8" Hex Screws and (9) pcs of 5/16" x OD30 x 3t Flat Washers to.



Fasten the Cartridge Clamps. Put on (2) Clamp Fixing Plates and fasten them to the Cartridge Clamp Fixing Base with (4) 5/16" x 3/4" Hex Screw and (4) 5/16" x OD18 x 2t Flat Washers.

Please read and save these instructions. Read carefully before attempting to assemble, install, operate or maintain the product described. Protect yourself and others by observing all safety information. Failure to comply with instructions could result in personal injury and/or property damage! Retain instructions for future reference.



OSKAR Downdraft Table



Slide in the Aluminum Mesh Filter
(423mm*285mm*22mm) with arrows pointing
towards right.

OSKAR Downdraft Table

Repair Parts Illustration

For Repair Parts, call 1-919-570-2862

24 hours a day – 365 days a year

Please provide following information:

- Model number
- Serial number (if any)
- Part description and number as shown in parts list

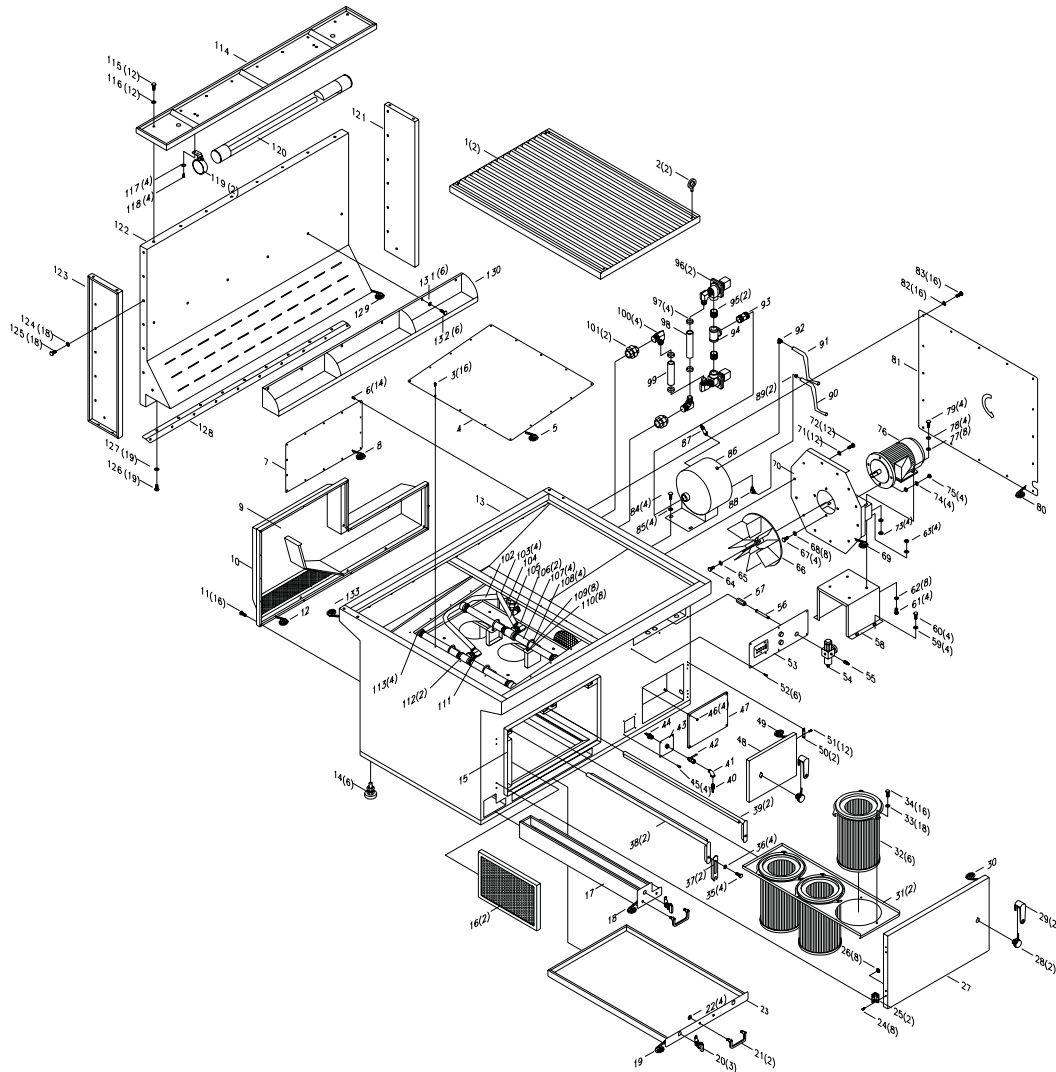


Figure 4

Please read and save these instructions. Read carefully before attempting to assemble, install, operate or maintain the product described. Protect yourself and others by observing all safety information. Failure to comply with instructions could result in personal injury and/or property damage! Retain instructions for future reference.



OSKAR Downdraft Table

Repair Parts List

Repair Parts List for Downdraft Table

Reference Number	Description	Part Number	Quantity
1	Table	OSKAR-FE6000SS-01	1
2	5/16" Hanger Screw	OSKAR-FE6000SS-02	2
3	5/32 "1/2" Metalsheet Philips Screw	OSKAR-FE6000SS-03	16
4	Seal Board	OSKAR-FE6000SS-04	1
5	Foam Tape (3*6*2.8M)	OSKAR-FE6000SS-05	1
6	5/32 "1/2" Metalsheet Philips Screw	OSKAR-FE6000SS-06	14
7	Airtank - Seal Board	OSKAR-FE6000SS-07	1
8	3*6*1.8M Foam Tape	OSKAR-FE6000SS-08	1
9	Noise Foam (680*130*25mm)	OSKAR-FE6000SS-09	1
10	Silencer	OSKAR-FE6000SS-10	1
11	1/4"*2" Truss Head Philips Screw	OSKAR-FE6000SS-11	14
12	Foam Tape (3*6*3.7M)	OSKAR-FE6000SS-12	1
13	Main Body	OSKAR-FE6000SS-13	1
14	M16*50 Adjustable Stand	OSKAR-FE6000SS-14	6
15	Seal (3*8*15H*2.5M)	OSKAR-FE6000SS-15	1
16	Aluminum Mesh (423*285*22)	OSKAR-FE6000SS-16	1
17	Drawer (S)	OSKAR-FE6000SS-17	1
18	Foam Tape (3*6*520mm)	OSKAR-FE6000SS-18	1
19	Foam Tape (3*6*1.3M)	OSKAR-FE6000SS-19	1
20	Drawer Lock C-408 I	OSKAR-FE6000SS-20	3
21	Drawer Handle A-42-A SUS	OSKAR-FE6000SS-21	2
22	M10 Hex Nut	OSKAR-FE6000SS-22	4
23	Drawer (L)	OSKAR-FE6000SS-23	1
24	M5*10 Round Head Inner Hex Screw	OSKAR-FE6000SS-24	8
25	Aluminum Alloy Hinge CL208	OSKAR-FE6000SS-25	2
26	M5 Flange Nut	OSKAR-FE6000SS-26	8
27	Door	OSKAR-FE6000SS-27	1
28	Round Head Lock A-172-2	OSKAR-FE6000SS-28	2
29	Handle A-172	OSKAR-FE6000SS-29	2



OSKAR Downdraft Table

Reference Number	Description	Part Number	Quantity
30	Foam Tape (6*19*2.5M)	OSKAR-FE6000SS-30	1
31	Filter Fixing Base	OSKAR-FE6000SS-31	2
32	Cartridge Filter (Teflon Coating) Ø225*330mm	OSKAR-FE6000SS-32	6
33	5/16"*OD30*3t Flat Washer	OSKAR-FE6000SS-33	18
34	5/16"*3/8" Hex Screw	OSKAR-FE6000SS-34	18
35	5/16"*3/4" Hex Screw	OSKAR-FE6000SS-35	4
36	5/16"*OD18*2t Flat Washer	OSKAR-FE6000SS-36	4
37	Cartridge Clamp Fixing Plate	OSKAR-FE6000SS-37	2
38	Cartridge Clamp - L	OSKAR-FE6000SS-38	2
39	Cartridge Clamp - R	OSKAR-FE6000SS-39	2
40	1/4"*5/16" Connector	OSKAR-FE6000SS-40	1
41	1/4" 90° Connector	OSKAR-FE6000SS-41	1
42	1/4" Switch Valve	OSKAR-FE6000SS-42	1
43	Drainage Fixing Plate	OSKAR-FE6000SS-43	1
44	1/4"*5/16" Connector	OSKAR-FE6000SS-44	1
45	5/32 "*"1/2" Metalsheet Philips Screw	OSKAR-FE6000SS-45	4
46	1/4" Hex Nut	OSKAR-FE6000SS-46	4
47	Capacitor Board	OSKAR-FE6000SS-47	1
48	Control Box Door	OSKAR-FE6000SS-48	1
49	Foam Tape (3*6*1.2M)	OSKAR-FE6000SS-49	1
50	2" Hinge	OSKAR-FE6000SS-50	2
51	5/32 "*"1/2" Metalsheet Philips Screw	OSKAR-FE6000SS-51	6
52	5/32 "*"1/2" Metalsheet Philips Screw	OSKAR-FE6000SS-52	12
53	Control Panel	OSKAR-FE6000SS-53	1
54	1/4" Water Filtering Device	OSKAR-FE6000SS-54	1
55	1/4"P Fast Connector	OSKAR-FE6000SS-55	1
56	1/4"*90mm Steel Pipe	OSKAR-FE6000SS-56	1
57	1/4" CV - One-way Valve	OSKAR-FE6000SS-57	1
58	Motor Supporting Base	OSKAR-FE6000SS-58	1
59	5/16"*OD18*2t Flat Washer	OSKAR-FE6000SS-59	4
60	5/16"*3/4" Hex Screw	OSKAR-FE6000SS-60	4



OSKAR Downdraft Table

Reference Number	Description	Part Number	Quantity
61	5/16"*1" Hex Screw	OSKAR-FE6000SS-61	4
62	5/16"*OD18*2t Flat Washer	OSKAR-FE6000SS-62	8
63	5/16" Hex Nut	OSKAR-FE6000SS-63	4
64	3/8"*1"(L) Hex Screw	OSKAR-FE6000SS-64	1
65	3/8"*OD30*3t Flat Washer	OSKAR-FE6000SS-65	1
66	15" Impeller	OSKAR-FE6000SS-66	1
67	3/8"*1-1/2" Hex Screw	OSKAR-FE6000SS-67	4
68	3/8"*OD23*2t Flat Washer	OSKAR-FE6000SS-68	8
69	Foam Tape (3*6*1.5M)	OSKAR-FE6000SS-69	1
70	Motor Plate	OSKAR-FE6000SS-70	1
71	5/16"*OD18*2t Flat Washer	OSKAR-FE6000SS-71	12
72	5/16"*3/4" Hex Nut	OSKAR-FE6000SS-72	12
73	5/16" Hex Nut	OSKAR-FE6000SS-73	4
74	3/8" Spring Washer	OSKAR-FE6000SS-74	4
75	3/8" Hex Screw	OSKAR-FE6000SS-75	4
76	5HP Motor	OSKAR-FE6000SS-76	1
77	3/8"*OD23*2t Flat Washer	OSKAR-FE6000SS-77	8
78	3/8" Spring Washer	OSKAR-FE6000SS-78	4
79	3/8"*1-1/2" Hex Screw	OSKAR-FE6000SS-79	4
80	3*6*3.3M Foam Tape	OSKAR-FE6000SS-80	1
81	Seal Board (L)	OSKAR-FE6000SS-81	1
82	1/4"*OD19*2t Flat Washer	OSKAR-FE6000SS-82	16
83	1/4"*3/4" Truss Head Philips Screw	OSKAR-FE6000SS-83	16
84	5/16"*3/4" Hex Screw	OSKAR-FE6000SS-84	4
85	5/16"*OD18*2t Flat Washer	OSKAR-FE6000SS-85	8
86	Airtank	OSKAR-FE6000SS-86	1
87	3/8" Safety Valve	OSKAR-FE6000SS-87	1
88	1/4"*5/16" 90° Connector	OSKAR-FE6000SS-88	1
89	13mm Clamp	OSKAR-FE6000SS-89	2
90	PVC Hose (Transparent) 1/2"(12.7*9.6mm)*1M/	OSKAR-FE6000SS-90	1
91	High Pressure Pipe (1/4"*2W*530mm)	OSKAR-FE6000SS-91	1



OSKAR Downdraft Table

Reference Number	Description	Part Number	Quantity
92	1/4"P*1/4"H 45° Connector	OSKAR-FE6000SS-92	1
93	1"*60mm Steel Pipe	OSKAR-FE6000SS-93	1
94	1" T-shape Connector	OSKAR-FE6000SS-94	1
95	1"*30mm Steel Pipe	OSKAR-FE6000SS-95	2
96	1"/110V Magnetic Valve	OSKAR-FE6000SS-96	2
97	Ø38MM Clamp	OSKAR-FE6000SS-97	4
98	Oil Pipe 1*1W*150mm	OSKAR-FE6000SS-98	1
99	Oil Pipe 1*1W*130mm	OSKAR-FE6000SS-99	1
100	1"*1" 90° Connector	OSKAR-FE6000SS-100	4
101	1" Connector	OSKAR-FE6000SS-101	2
102	Oil Pipe 1*1W*870mm	OSKAR-FE6000SS-102	1
103	Ø38MM Clamp	OSKAR-FE6000SS-103	4
104	1" Connector	OSKAR-FE6000SS-104	1
105	Oil Pipe 1*1W*480mm	OSKAR-FE6000SS-105	1
106	1"*1" L-shape 90° Connector	OSKAR-FE6000SS-106	2
107	Steel Pipe 1"*300mm	OSKAR-FE6000SS-107	4
108	3/8"*1" U-shape Screw Clamp	OSKAR-FE6000SS-108	4
109	3/8"*OD23*2t Flat Washer	OSKAR-FE6000SS-109	8
110	3/8" Hex Screw	OSKAR-FE6000SS-110	8
111	1"*1" L-shape 45° Connector	OSKAR-FE6000SS-111	1
112	1" T-shape Connector	OSKAR-FE6000SS-112	2
113	1" Pipe Cap	OSKAR-FE6000SS-113	4
114	Backdraft Module - Upper Panel	OSKAR-FE6000SS-114	1
115	5/16"*3/4" Hex Screw	OSKAR-FE6000SS-115	12
116	5/16"*OD18*2t Flat Washer	OSKAR-FE6000SS-116	12
117	1/4"*3/4" Hex Screw	OSKAR-FE6000SS-117	4
118	1/4"*OD19*2t Flat Washer	OSKAR-FE6000SS-118	4
119	Light Fixing Clamp	OSKAR-FE6000SS-119	2
120	Working Light (20W/110V/60HZ)	OSKAR-FE6000SS-120	1
121	Backdraft Module - Side Panel (R)	OSKAR-FE6000SS-121	1
122	Backdraft Module	OSKAR-FE6000SS-122	1
123	Backdraft Module - Side Panel (L)	OSKAR-FE6000SS-123	1



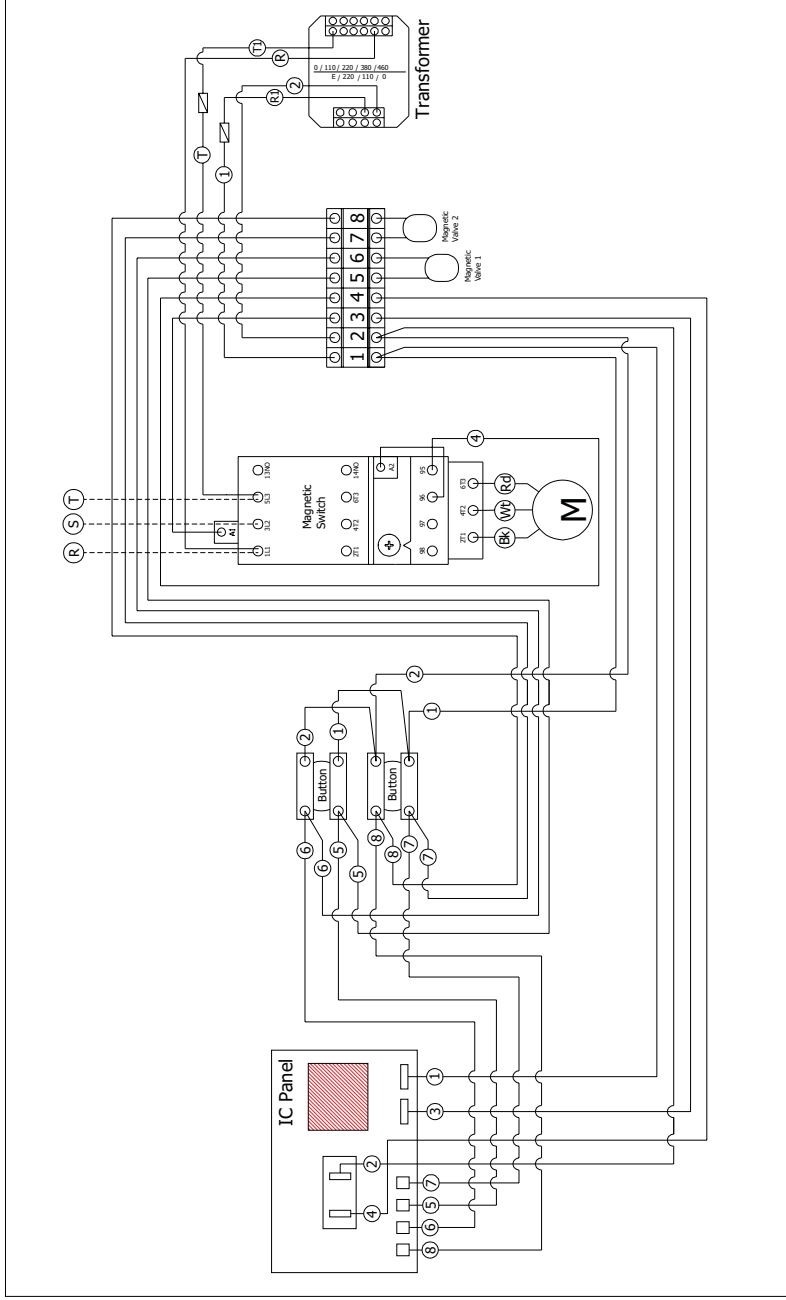
OSKAR Downdraft Table

Reference Number	Description	Part Number	Quantity
124	5/16"*OD18*2t Flat Washer	OSKAR-FE6000SS-124	18
125	5/16"*3/4" Hex Screw	OSKAR-FE6000SS-125	18
126	5/16"*3/4" Hex Screw	OSKAR-FE6000SS-126	19
127	5/16"*OD18*2t Flat Washer	OSKAR-FE6000SS-127	19
128	Backdraft Module - Fixing Plate	OSKAR-FE6000SS-128	1
129	Foam Tape (3*19*3.2M)	OSKAR-FE6000SS-129	1
130	Tooling Rack	OSKAR-FE6000SS-130	1
131	5/16"*OD18*2t Flat Washer	OSKAR-FE6000SS-131	6
132	5/16"*3/4" Hex Screw	OSKAR-FE6000SS-132	6
133	3*6*3.2M Foam Tape	OSKAR-FE6000SS-133	1



OSKAR Downdraft Table

Appendix



Please read and save these instructions. Read carefully before attempting to assemble, install, operate or maintain the product described. Protect yourself and others by observing all safety information. Failure to comply with instructions could result in personal injury and/or property damage! Retain instructions for future reference.



SMT-090424

